

HP MWT 1000



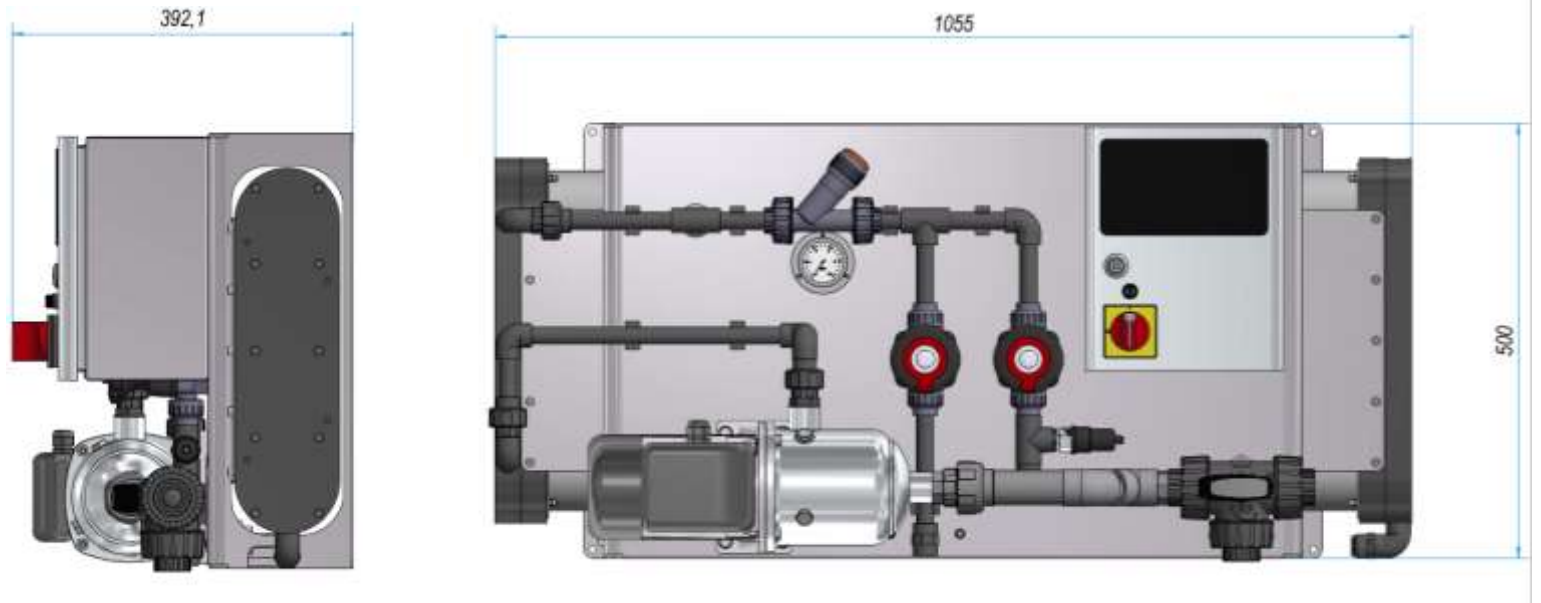
SYSTEM DESCRIPTION

HP MWT is the brand new marina water treatment system using reverse osmosis membranes, that bring TDS and total hardness to very low levels, protecting all systems that use fresh water from limescale, and allowing a **no-spots effects** on all the surfaces. HP MWT systems are designed to provide water with very low TDS and hardness to safeguard the systems, saving on maintenance of boilers, pipes, pumps, toilets, washing machines, dishwashers etc.

HP MWT is already interfaced with Part-NET Interface.



HP MWT DIMENSIONS



TECHNICAL SPECIFICATIONS

Technical specifications	
Max pressure bar	5
Min pressure bar	2
Max temperature °C	45
TDS max	1500
Voltage	230V 50Hz – 230V 60Hz
Power consumption	950W
On / Off	Automatic through floating switch Manual during over-ride
Functioning	Fully automatic
Total weight KG	40
Interface	Part-NET for plotters and internet MODBUS for monitoring systems
Flow rate Lt/h	1000
Dimensions mm (WxHxP)	1055 x 500 x 392



HP MWT USE

HP MWT is the brand new marina water treatment system, which allow, in a completely automatic way thanks to the connection of the floating switch and the Part-NET interface with all the navigation plotters (Garmin, Raymarine, Furuno and Navico), to adjust the TDS (Total Dissolved Salts) to almost 0 and avoid any type of encrustation, obstruction or the creation of impurities, caused by the concentrations of mineral salts in the water from the marina.

HP MWT is equipped with an automatic On and Off function through the floating switch of the fresh water tank, maintaining an optimal level.



WHAT MWT PROTECTS

Unlike many other systems, HP MWT guarantees the complete removal of all ions that can cause limescale and encrustations, safeguarding boilers, toilets, sinks, showers, taps, pipes, washing machines, dishwashers, etc ...

Any impurities of limescale and any other encrusting molecule will be eliminated. It will therefore be possible to save on maintenance interventions on all devices that use fresh water.



Pumps



Wasing machines



Boilers



Pipes



Fresh water toilettes

Avoid limescale deposits inside the boiler



Avoid limescale on smooth surfaces and inside the pipes



Avoid limescale on showers and taps



NO MORE LIMESCALE ON THE SURFACES



In addition to saving the entire freshwater system of the boat, HP MWT will allow to wash the surfaces of the boat without drying, and eliminates limescale when the surfaces have dried, allowing the end user a enormous time saving during the stop at the marina. HP MWT is studied and designed for any type of boat, Superyacht or Megayacht.



DOES HP MWT WORKS AUTOMATICALLY?

Thanks to the Part-NET Interface technology, all the parameters, commands and diagnostics of the system can be controlled by the on-board plotter or by the monitoring system. With the start and shutdown of the system by a floating switch, installed in the fresh water tank, HP MWT will work autonomously and automatically.



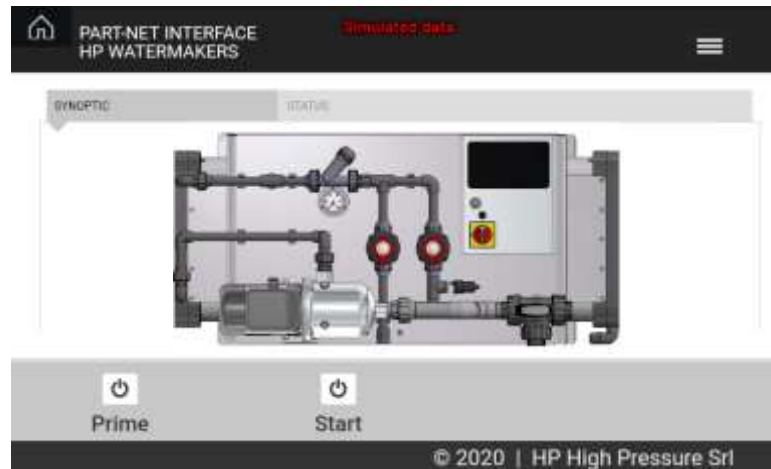
Part-NET Interface



HP MWT AND PART-NET INTERFACE

The interface allows you to turn HP MWT on and off manually, reset any alarms, monitor the functioning and check all the data of the systems connected to Garmin, Raymarine and Furuno, Simrad, B&G, Lowrance, and to the on-board custom monitoring systems.

Part-Net will also show the user manual and trouble shooting directly on the plotters, in order to have all the information of the functions of the system.



COMPATIBILITY

 GARMIN

 Raymarine

 FURUNO

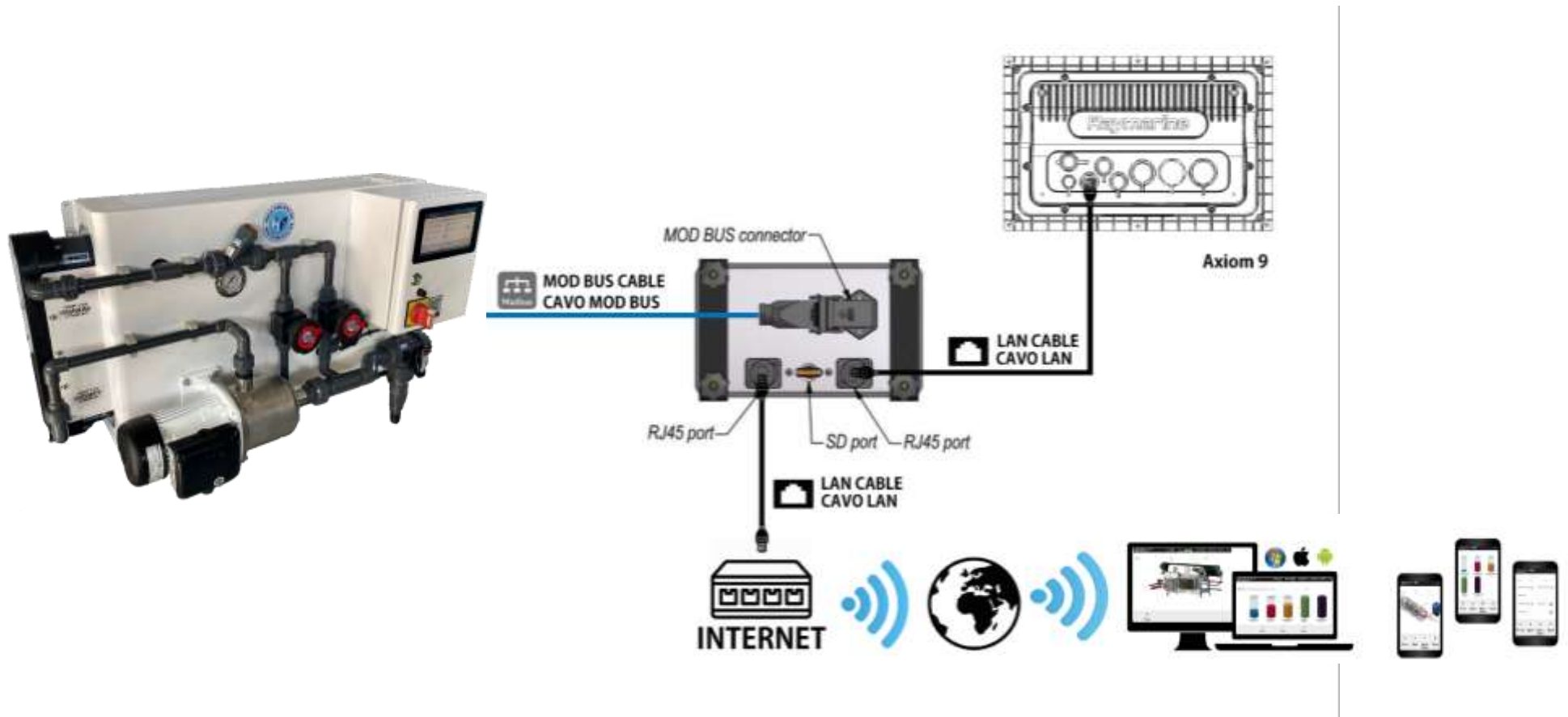
 SIMRAD

 LOWRANCE

 B&G

- > RAYMARINE - AXIOM SERIES <
- > GARMIN - ONE HELM 8400 - 8600 <
- > FURUNO - NAVNET ZTTOUCH2 AND 3 <
- > B&G - ZEUS3 7-9-12-16 / ZEUS3 GLASSHELM 16-19-24 <
- > SIMRAD - GO 7 - 9 - 12 / NSS EVO3 7-9-12-16 / NSO EVO3 16-19-24 / IDS KOMODO 9-12 <
- > LOWRANCE - HDS LIVE 9-12- 16 / HDS CARBON 9-12-16 <

CONNECTION SCHEME



COMPARISON SOFTENER HP MWT



VS



Softeners are formidable tools for the kidnap of the calcium ions, that cause the formation of the limestone molecules. Unfortunately, the action of the softener is limited only to that specific ion. HP MWT intercepts all ions that can cause limescale formation while common softeners don't. The softeners require constant maintenance due to the salt, needed for the regeneration of the ion exchange resins. The HP MWT system works with osmotic membranes and give low incoming TDS and it doesn't require washing.